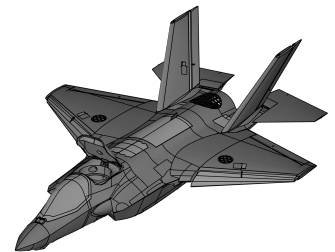


Projekt/ Project: F-35B Version: 1.0 (05.2023)



Projekteigentümer/Project owner: Joel Vlashof, Andreas Siek

Veröffentlicher/ Published by: RC-Jetprint.de

Spezifikationen und Zubehör/ Specifications and list of components:

Spannweite/ Wingspan:	920 mm
Länge/ Length:	1.180 mm
Flächenbelastung/ Wing load:	Nicht berechnet/ Not calculated
Luft-Geschwindigkeiten/ Air speeds:	45-140km/h
Haupt-EDF/ Main-EDF:	JP 70 mm – 4 - 6S - 2250Kv (CCW rotation)
Hauptluftführung/ Main ducting:	Open Ducting – 95° rotatable thrust vectoring
Gewicht/ Weight:	App. 3.250 gr
Stand Schub / Horizontal thrust:	2.700 gr
Vertikaler Stand Schub/ Vertical thrust:	5.700 gr
Haupt-Lipo/ Main-Lipo:	Goaneng 6S LiHV, 100C/ 200C, 4.500 mAh
Regler/ ESC:	2 x APD 120F3[X]V2
Spannungsversorgung/ BEC:	Matek UBEC Duo 4A 5V-12V
Seitenruder Servo/ Rudder servo:	2 x Hitec HS-70-MG (or similar)
Querruder Servo/ Ailerons servo:	2 x Hitec HS-70-MG (or similar)
Höhenruder Servo/ Elevator servo:	2 x Hitec HS-70-MG (or similar)
Vorflächen Servo/ Slats servo:	2 x Hitec HS-70-MG (or similar)
Empfänger/ Receiver:	Min. 8 CH
Vektorsteuerung/ Thrust vectoring:	2 x Torcster Micro Servo NR-54 MG Digital
Vektordrehung/ Vecor turning servo:	1 x Hitec MD-65-MG (programmable servo)
EZF Bug/ Front gear retract:	1 x Pichler size (M) steerable retract
Lenkung Bugservo/ Front gear servo:	8mm Micro Servo
EZF Haupt/ Main gear retract:	2 x Pichler size (M) 90° rotatable retract
EZF Fläche/ Wing gear retarct:	Nicht notwendig/ Not required
Vorderer Impeller/ Front EDF:	JP 70 mm - 6S (CW rotation)
Hinterer Impeller/ Back EDF:	Nicht notwendig/ Not required
Flächenimpeller/ Wing EDF:	2 x QX Motor, 30 mm - 7.000KV or 14.000KV
Yaw Impeller/ Yaw EDF:	Nicht notwendig/ Not required
Stabi-Lipo/ Leveling-Lipo:	3S SLS XTRON 2200 mAh, 30/60C
Stabi-System/ Leveling system:	KK2.1.5 board – “OpenAero V1.6” flashed (VTOL version)
Flugstabilisierung/ Flight Controller:	3-Axis Gyro (user dependant)
Telemetrie/ Telemetry:	Capacity, Voltage, Air speed, etc. (user dependant)

Hinweise:

Die hier gelisteten Komponenten sind Empfehlungen des Projekteigentümers, die ausgesucht und getestet wurden, um ein optimiertes Schub-Gewichtsverhältnis darzustellen, bei gleichzeitiger verlässlicher Funktionalität der Komponenten. **Die Druckdateien sind auf diese Komponenten ausgelegt!**

Notes:

The components listed are the project owners recommendations that have been selected and tested to provide an optimized thrust-to-weight ratio while maintaining reliable component functionality. **The print files are designed for these components!**

Teile Liste/ Part List		
Part	Amount	Recommendations/ Links
Materials		
LW-PLA	2.000 gr.	ColorFabb
PLA	200 gr.	ColorFabb
3D Lac Plus	1	
Super Glue	150 gr.	
Super Glue Accelerator	1 bottle	
Sand Paper 80 grid, 120 grid	5 sheets	
Fork heads plastic M2	20 pc.	
Ball joints M2	20 pc.	
M2 threaded rod	1 m	
8x1mm Carbon Tube	500 mm	
6x1mm Carbon Tube	500 mm	
5x1mm Carbon Tube	100 mm	
1,5mm Carbon Rod	300 mm	
Nylon screws M4	2 pc.	
Nylon screws and nuts M3	24 pc.	
Stainless steel screws M2/ M3	10 pc.	
Magnets 5x5x5	4 pc.	
Magnets 5x5x2	8 pc.	
Wheels 50 mm diameter (foam)	3 pc.	
RC-hinges 20 x 10	20 pc.	
Hinge tape	1 m	
Several servo extension cables	6 - 10 pc.	User dependant
Several servo Y-cables	6 – 10 pc.	User dependant